

INDICE

Index

MASTER-PLATE® & MASTER-PLATE® RS p. 4

Guida alla scelta p. 5
Guide to choice

-
Gamma MASTER-PLATE® p. 10
MASTER-PLATE® range

-
Gamma MASTER-PLATE® RS p. 20
MASTER-PLATE® RS range

-
Accessori p. 30
Accessories

-
Prodotti speciali p. 32
Specials

MASTER-PLATE®



Caratteristiche Features

Sistema composto da una BASE PIANA FORATA e da un elemento di fissaggio. Perni, boccole o dadi assemblati su un'ampia gamma di piastrine con forme e dimensioni diverse. Soluzioni passanti o cieche per tutte le esigenze. *System composed of a PERFORATED FLAT BASE and a fastener. Studs, bushes or nuts assembled on a wide range of plates with different shapes and dimensions. Through-hole or blind solutions are available for any kind of need.*

Vantaggi Advantages

Ampia gamma, versatilità e adattabilità, veloce e facile da installare. *Wide range, versatility and adaptability, fast and easy to install.*

Montaggio Assembly

Incollaggio, laminazione, stampaggio. *Bonding, rolling, molding.*

MASTER-PLATE® RS



Caratteristiche Features

Sistema in grado di garantire uno spessore costante della colla, composto da una BASE CIECA con la presenza di DISTANZIALI TONDI (Round Spacers) e da un elemento di fissaggio. Perni, boccole o dadi assemblati su un'ampia gamma di piastrine con forme e dimensioni diverse. Soluzioni passanti o cieche per tutte le esigenze. *System that guarantees an even adhesive thickness, composed of a BLIND BASE with ROUND SPACERS and a fastener. Studs, bushes or nuts assembled on a wide range of plates with different shapes and dimensions. Through-hole or blind solutions are available for any kind of need.*

System that guarantees an even adhesive thickness, composed of a BLIND BASE with ROUND SPACERS and a fastener. Studs, bushes or nuts assembled on a wide range of plates with different shapes and dimensions. Through-hole or blind solutions are available for any kind of need.

Vantaggi Advantages

Ampia gamma, versatilità e adattabilità, veloce e facile da installare, certezza dell'incollaggio, pulizia. *Wide range, versatility and adaptability, fast and easy to install. Even adhesive thickness, cleanliness.*

Montaggio Assembly

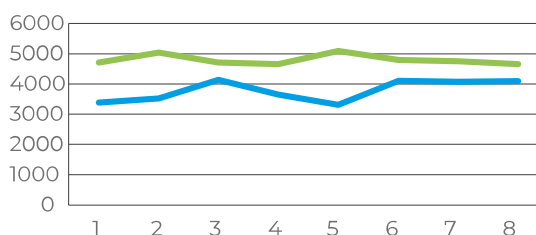
Incollaggio.
Bonding.

GUIDA ALLA SCELTA

Guide to choice

Esigenze diverse comportano scelte diverse.
Different needs means different choices.

Trazione - Pull out force



Master-Plate®

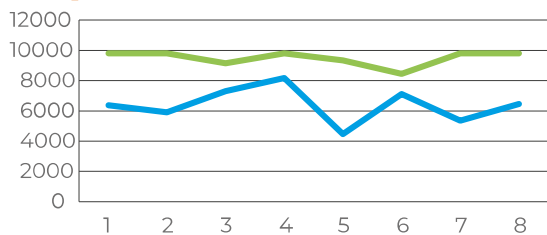
| | |
|---------------------------------|---------------|
| Valore Minimo Minimum Value | 3312N (338Kg) |
| Valore Massimo Maximum Value | 4145N (423Kg) |
| Delta Delta | 833N (85Kg) |
| Valore Medio Average Value | 3783N (386Kg) |



Master-Plate® RS

| | |
|---------------------------------|---------------|
| Valore Minimo Minimum Value | 4655N (475Kg) |
| Valore Massimo Maximum Value | 5086N (519Kg) |
| Delta Delta | 431N (44Kg) |
| Valore Medio Average Value | 4802N (490Kg) |

Taglio - Shear force



Master-Plate®

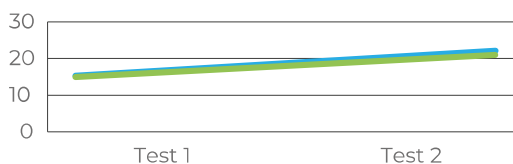
| | |
|---------------------------------|---------------|
| Valore Minimo Minimum Value | 4469N (456Kg) |
| Valore Massimo Maximum Value | 8183N (835Kg) |
| Delta Delta | 3714N (379Kg) |
| Valore Medio Average Value | 6390N (652Kg) |



Master-Plate® RS

| | |
|---------------------------------|----------------|
| Valore Minimo Minimum Value | 8457N (863Kg) |
| Valore Massimo Maximum Value | 9807N (1000Kg) |
| Delta Delta | 1342N (137Kg) |
| Valore Medio Average Value | 9486N (968Kg) |

Torsione - Torque



Master-Plate®

| | |
|---------------------------------|----------|
| Valore Minimo Minimum Value | 16,61N/m |
| Valore Massimo Maximum Value | 20,63N/m |
| Delta Delta | 4,02N/m |
| Valore Medio Average Value | 18,62N/m |



Master-Plate® RS

| | |
|---------------------------------|----------|
| Valore Minimo Minimum Value | 16,11N/m |
| Valore Massimo Maximum Value | 19,67N/m |
| Delta Delta | 3,56N/m |
| Valore Medio Average Value | 17,89N/m |

Impiego di collante

Adhesive consumption

MASTER-PLATE®

La distribuzione del collante interessa l'intera superficie della piastrina. Si consiglia un'applicazione «a serpentina» in modo da creare uno strato costante e continuo. L'eventuale eccedenza trafila attraverso i fori della base.

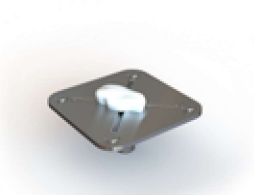
Adhesive is applied on the entire surface of the plate. We recommend a "serpentine" application to create a constant and continuous layer. Any excess gets out through the holes of the base.



MASTER-PLATE® RS

Il collante è applicato al centro della base. Esercitando una leggera pressione in fase di posa questo si distribuisce uniformemente su tutta la superficie. I distanziali che caratterizzano la piastrina fungono da punto d'arresto.

Adhesive is applied at the center of the base. By exerting a slight pressure during the lying phase, it is evenly distributed over the entire surface. The Round Spacers characterizing the plate act as a stopping point.



| | Q.tà media di Collante Utilizzato Average quantity of adhesive used | Numero medio di incollaggi per cartuccia (50 ml) Average number of pasted pieces per cartridge (50ml) | Δ% di collante utilizzata rispetto alla Versione Standard Δ% of adhesive used vs MASTER-PLATE® Standard Version | Costo Indicativo del singolo incollaggio* Average cost of single gluing* |
|-------------------------|------------------------------------------------------------------------|----------------------------------------------------------------------------------------------------------|--------------------------------------------------------------------------------------------------------------------|-----------------------------------------------------------------------------|
| MASTER-PLATE® | 2,32 gr | 21 pz. | - | 0,38 €/pc |
| MASTER-PLATE® RS | 0,65 gr | 75 pz. | -72 % | 0,10 €/pc |

* Considerato un costo di € 8,00 per cartuccia 50 ml
* When price of 50ml adhesive cartridge is € 8.00

Interferenze e mantenimento assialità

Interferences and axiality maintenance

MASTER-PLATE®

L'eccedenza del collante, fuoriuscendo dai fori della base, crea un'interferenza. Non è per ciò possibile avvitare un componente al MASTER-PLATE® sino al limite inferiore della parte filettata. È altrettanto critico, mantenere l'assialità tra le parti, tali interferenze variano in funzione della quantità di collante applicato. Mediamente si rileva un ingombro compreso tra 3 e 5 mm.

The excess of adhesive, coming out of the holes of the base, creates interference. Therefore, it is not possible to screw a component to MASTER-PLATE® until the lower bound of the threaded part. It is equally critical to maintain axiality between the parties. Such interferences vary depending on the amount of adhesive applied. On average, there is a footprint between 3 and 5mm.



MASTER-PLATE® RS

Non si evidenzia alcuna interferenza. Il collante non si interpone tra il MASTER-PLATE® e l'elemento avvitato adesso. La parte filettata è completamente libera e sfruttabile. Non si riscontrano problemi di assialità.

No interference is remarked. The adhesive does not interpose between the MASTER-PLATE® and the element screwed to it. The threaded part is completely free and usable. There are no axiality problems.



Conclusioni

Conclusions

Tutta la gamma **MASTER-PLATE®** sottoposta ai test ha ottenuto ottime prestazioni. Pur mantenendo la stessa filosofia, le due tipologie di **MASTER-PLATE®** ottengono performance diverse a seconda dei diversi criteri di valutazione.

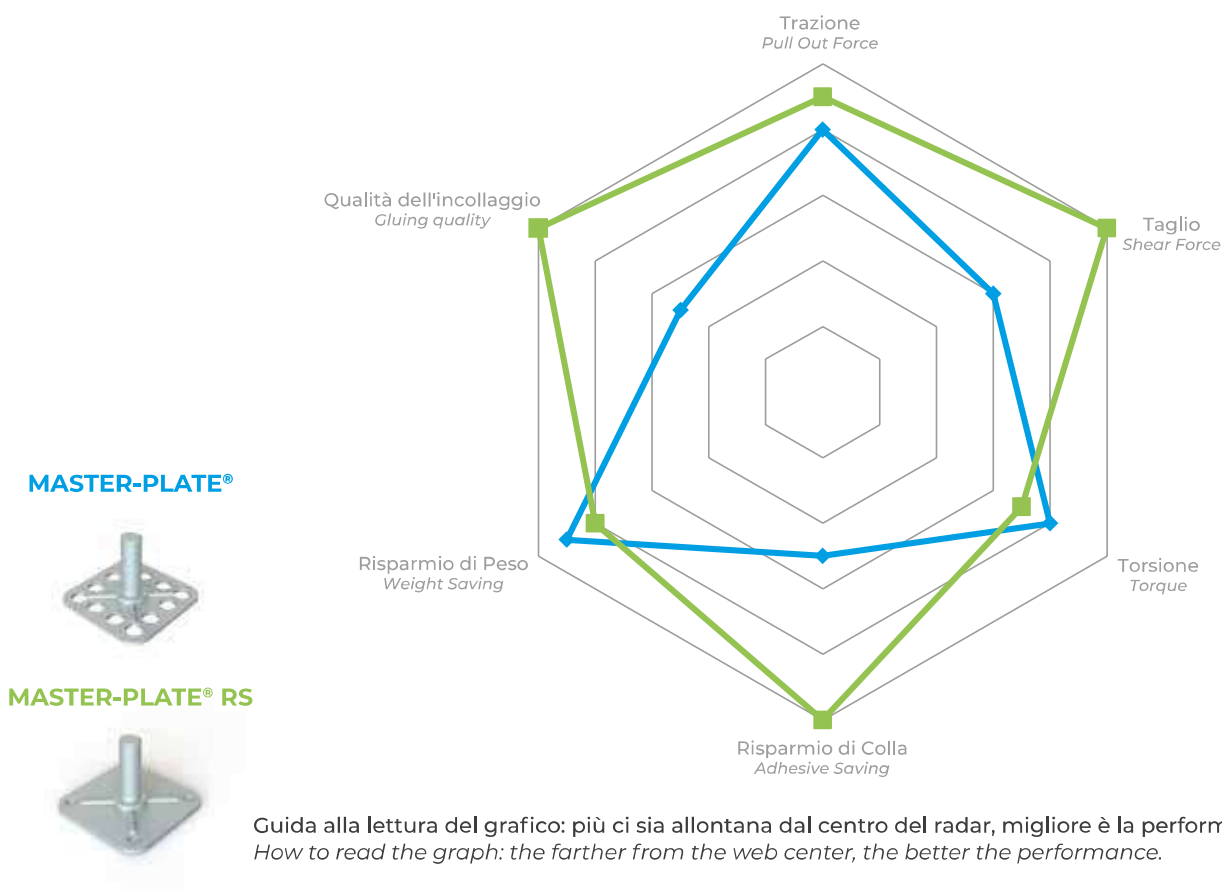
L'orientamento nella scelta della Serie dipende da fattori diversi, quali:

- Resistenza alla Trazione
- Resistenza al Taglio
- Resistenza alla Torsione
- Risparmio di Colla
- Peso del sistema di fissaggio completo
- Qualità dell'incollaggio (presenza di interferenze e mantenimento dell'assialità)

The whole MASTER-PLATE® range performed very well during tests, and the two different types of MASTER-PLATE® perform differently, depending on the different evaluation criteria.

The choice amongst the Series products depends on different factors, such as:

- Pull Out Force Resistance
- Shear Force Resistance
- Torque Resistance
- Adhesive Saving
- Weight Saving
- Gluing quality (interferences and maintaining axiality)



COMPOSIZIONE DEL CODICE

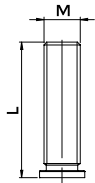
Steps for creating the reference code

STEP 1

Tipo di ancoraggio
Type of anchorage

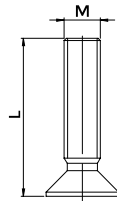
PR

SERIE/SERIES



PRS

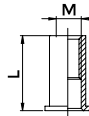
SERIE/SERIES



BR_

SERIE/SERIES

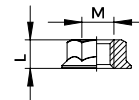
P Piastrina Passante
Through Hole Plate
C Piastrina Cieca
Blind Hole Plate



DF_

SERIE/SERIES

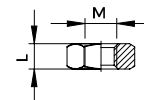
P Piastrina Passante
Through Hole Plate
C Piastrina Cieca
Blind Hole Plate



DR_

SERIE/SERIES

P Piastrina Passante
Through Hole Plate
C Piastrina Cieca
Blind Hole Plate



STEP 2

Lunghezze perno (L)
Stud length (L)

10
12
16
20
25
30
40

Lunghezze perno (L)
Stud length (L)

45
50
60
70
80
90
100

Altezze boccola (L)
Bush height (L)

05
10
12
15
20
22
25

Altezze dado (L)
Nut height (L)

03 = M4X3,2
04 = M5X4.0
05 = M6X5.0
06 = M8X6.5
08 = M10X8

Altezze dado (L)
Nut height (L)

06 = M8X6.5
08 = M10X8

STEP 3

Tipo piastrina
Plate type



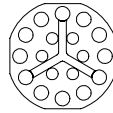
T1900
Ø19 mm



T2000
Ø20 mm



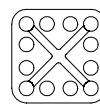
T2300
Ø23 mm



T3800
Ø38 mm



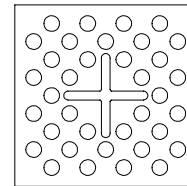
Q1515
15x15 mm



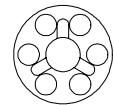
Q3232
32x32 mm



R3815
38x15 mm



Q5858
58x58 mm



Esempio di piastrina passante
Example of through hole plate
Q1515 non passante
Q1515 no through hole

STEP 4

Filetto (M)
Thread (M)

040 M4
050 M5
060 M6
080 M8

050 M5
060 M6
080 M8
100 M10

040 M4
050 M5
060 M6
080 M8
100 M10

040 M4
050 M5
060 M6

080 M8
100 M10

STEP 5

Materiale
Material

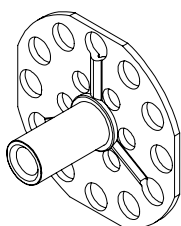
Acciaio Zincato
Acciaio Inox 316 allo stato naturale
Acciaio Inox 316 Elettrolucidato

.12 Zinc Plated Steel
.51 316 Stainless Steel in its natural state
.56 Electropolished 316 Stainless Steel

.12
.51
.56

Esempio di designazione - Example of code designation

Boccola filettata con piastrina cieca tonda T3800, filettatura M6, altezza 12 mm, in acciaio zincato.
Threaded bush with T3800 round blind plate, M6 thread, 12mm height, zinc-plated steel.



BRC 12 T3800 060. 12

STEP 1

STEP 2

STEP 3

STEP 4

STEP 5

NOTA BENE: per conoscere le disponibilità e la fattibilità dei prodotti, contattare l'ufficio tecnico/commerciale Specialinsert® oppure consultare le schede tecniche scaricabili dal nostro sito www.specialinsert.it
NOTA BENE: For more information regarding product availability and feasibility, please contact the Specialinsert® tech/sales office or refer to the technical sheets downloadable at www.specialinsert.it

MONTAGGIO Installation



1
Predisporre la superficie idonea all'incollaggio
Prepare the surface for receiving the adhesive



2
Depositare sul MASTER-PLATE® l'apposito collante
Place the proper adhesive on MASTER-PLATE®



3
Posizionare il MASTER-PLATE® sulla superficie
Place MASTER-PLATE® on the surface



4
Premere MASTER-PLATE® fino alla fuoriuscita del collante dai fori della base
Press the MASTER-PLATE® in order to have some adhesive coming out from the holes of the base plate



5
Attendere l'indurimento del collante prima di utilizzare il fissaggio
Wait for the adhesive to harden before using the fastening system



6
MASTER-PLATE® ora è fissata strutturalmente ed assemblata
MASTER-PLATE® is structurally assembled and ready for use

SUGGERIMENTI PER LA SCELTA DELLE COLLE

Adhesives suggestions

La tabella sottostante fornisce alcune indicazioni di massima sulle possibilità di utilizzo del collante. Per ottenere un corretto impiego del prodotto si consiglia di effettuare prove di incollaggio.

The table below gives some overall indications about several uses of the adhesive and materials. To get a correct use of the product, we advise you to perform bonding tests.

| Tipo Colla Adhesive type | Compositi Composites | Plastica(*) Plastic(*) | Legno Wood | Metallo Metal | Lapidei Natural Stone | Agglomerati Conglomerated | Cristalli Glass |
|-----------------------------|-------------------------|---------------------------|---------------|------------------|--------------------------|------------------------------|--------------------|
| MASTIKOL SG 300-15 | o o(**) | o o | - | o o (**) | o | o o | o |
| VABER MA300 | o o | o o | o | o o | o | o o | o o |
| 3M DP8810NS | o o | o | o | o o | o | o | - |
| LOCTITE 9466 | o o | o | o o | o o | o o | o o | o o |

LEGENDA: - Non adatto
KEY: - Not suitable

o Sufficiente
o Sufficient

o o Buono
o o Good

(*) Adesivi idonei ad alta energia superficiale di facile incollaggio.

(*) Adhesives suitable for high surface energy of easy bonding.

Su plastiche a bassa energia superficiale e quindi di scarsa adesione si consigliano le seguenti colle: 3M DP8010, MASTIKOL PPX5.

On plastics with low surface energy, therefore with low adhesion properties, we recommend: 3M DP8010, MASTIKOL PPX5.

Per la corretta definizione dell'adesivo da utilizzare, su materiali con poca tenuta quali PE, PA, PP e silicone raccomandiamo di interpellare direttamente i produttori delle colle.

To get a correct definition of the adhesive to be use, on low adhesion materials, as PE, PA, PP and silicone, please refer to the adhesive manufacturers.

(**) Non necessita l'uso di primer o abrasione.

(**) Primer or abrasion not needed.

STEP 1 **PR** SERIE/SERIES

 Perno filettato con piastrina
 Threaded stud with plate

STEP 2 **Lunghezze perno (L)** 10* - 12 - 16 - 20 - 25 - 30 - 40
 Stud lenght (L)

 * Non disponibile nella versione inox 316
 * 316 Stainless Steel not available
 Per lunghezza perno oltre 40mm consultare la scheda PRS
 For stud lenght over 40mm, see PRS technical sheet

STEP 3 **Tipo piastrina**
 Plate type

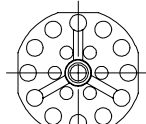

T1900=Ø19



T2000=Ø20



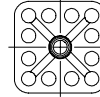
T2300=Ø23



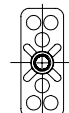
T3800=Ø38



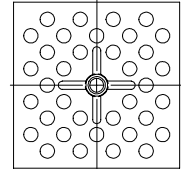
Q1515=15x15



Q3232=32x32



R3815=38x15



Q5858=58x58


STEP 4 **Filetto (M)**
 Thread (M)

 M4 - M5 - M6 - M8
 Tolleranza 6g / Tolerance 6g

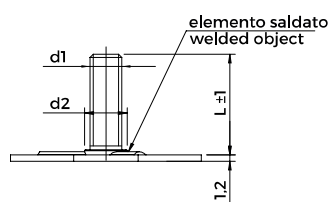
 Per filetto M10 consultare la scheda PRS
 For M10 thread, see PRS data sheet

STEP 5 **Materiale**
 Material

 Acciaio Zincato .12 Zinc Plated Steel .12
 Acciaio Inox 316 .51 316 Stainless Steel .51

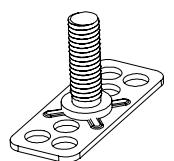
| CODICE CODE | d1 Filetto Thread | d2 Acciaio .12 Steel .12 | d2 Inox .51 Stainless Steel .51 | CODICE CODE | d1 Filetto Thread | d2 Acciaio .12 Steel .12 | d2 inox .51 Stainless Steel .51 |
|----------------|-------------------------|--------------------------------|------------------------------------------|----------------|-------------------------|--------------------------------|------------------------------------------|
| PR_T1900040._ | | | | PR_Q1515040._ | | | |
| PR_T2000040._ | M 4 | 5,5 | 8,5 | PR_Q3232040._ | M 4 | 5,5 | 8,5 |
| PR_T2300040._ | | | | PR_R3815040._ | | | |
| PR_T3800040._ | | | | PR_Q5858040._ | | | |
| PR_T1900050._ | | | | PR_Q1515050._ | | | |
| PR_T2000050._ | M 5 | 6,5 | 9,8 | PR_Q3232050._ | M 5 | 6,5 | 9,8 |
| PR_T2300050._ | | | | PR_R3815050._ | | | |
| PR_T3800050._ | | | | PR_Q5858050._ | | | |
| PR_T1900060._ | | | | PR_Q1515060._ | | | |
| PR_T2000060._ | M 6 | 7,5 | 9,8 | PR_Q3232060._ | M 6 | 7,5 | 9,8 |
| PR_T2300060._ | | | | PR_R3815060._ | | | |
| PR_T3800060._ | | | | PR_Q5858060._ | | | |
| PR_T1900080._ | | | | PR_Q1515080._ | | | |
| PR_T2000080._ | M 8 | 10,0 | 11,5 | PR_Q3232080._ | M 8 | 10,0 | 11,5 |
| PR_T2300080._ | | | | PR_R3815080._ | | | |
| PR_T3800080._ | | | | PR_Q5858080._ | | | |

Le dimensioni sono indicative, non vincolanti, espresse in mm – Dimensions are indicative and not binding, expressed in mm


PR 20 R3815 060. 12
STEP 1 **STEP 2** **STEP 3** **STEP 4** **STEP 5**

Esempio di designazione: Perno filettato con piastrina rettangolare R3815, filettatura M6, lunghezza 20 mm, in acciaio zincato.

Example of code designation: Threaded stud with R3815 rectangular plate, M6 thread, 20mm length, zinc-plated steel



PR20R3815060.12

STEP 1 **PRS** SERIE/SERIES

Perno filettato con testa svasata con piastrina
Threaded stud with countersunk head and plate

STEP 2 **Lunghezze perno (L)** 45 - 50 - 60 - 70 - 80 - 90 - 100

Stud length (L) Per lunghezza perno inferiore a mm 45 consultare la scheda PR
For stud length under 45mm, see PR technical sheet

STEP 3 **Tipo piastrina**

Plate type



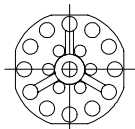
T1900=Ø19



T2000=Ø20



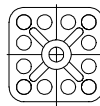
T2300=Ø23



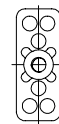
T3800=Ø38



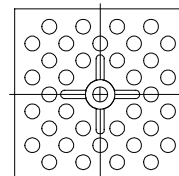
Q1515=32x32



Q3232=32x32



R3815=38x15



Q5858=58x58



STEP 4 **Filetto (M)**

Thread (M)

M5 - M6 - M8 - M10
Tolleranza 6g / Tolerance 6g

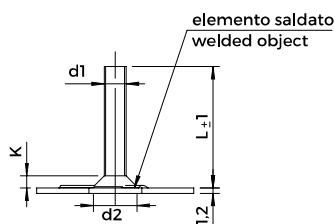
STEP 5 **Materiale**

Material

Acciaio Zincato .12 Zinc Plated Steel .12
Acciaio Inox 316 .51 316 Stainless Steel .51

| CODICE CODE | d1 Filetto Thread | d2 (max) | K +0,5 0 | CODICE CODE | d1 Filetto Thread | d2 (max) | K +0,5 0 |
|----------------|-------------------------|-------------|----------------|----------------|-------------------------|-------------|----------------|
| PRS_T1900050._ | | | | PRS_Q1515050._ | | | |
| PRS_T2000050._ | M 5 | 10 | 2,8 | PRS_Q3232050._ | M 5 | 10 | 2,8 |
| PRS_T2300050._ | | | | PRS_R3815050._ | | | |
| PRS_T3800050._ | | | | PRS_Q5858050._ | | | |
| PRS_T1900060._ | | | | PRS_Q1515060._ | | | |
| PRS_T2000060._ | M 6 | 12 | 3,3 | PRS_Q3232060._ | M 6 | 12 | 3,3 |
| PRS_T2300060._ | | | | PRS_R3815060._ | | | |
| PRS_T3800060._ | | | | PRS_Q5858060._ | | | |
| PRS_T2000080._ | | | | PRS_Q3232080._ | | | |
| PRS_T2300080._ | M 8 | 16 | 4,4 | PRS_Q5858080._ | M 8 | 16 | 4,4 |
| PRS_T3800080._ | | | | PRS_Q3232100._ | | | |
| PRS_T3800100._ | M 10 | 20 | 5,5 | PRS_Q5858100._ | M 10 | 20 | 5,5 |

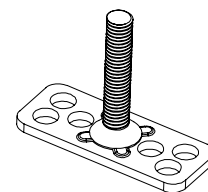
Le dimensioni sono indicative, non vincolanti, espresse in mm - Dimensions are indicative and not binding, expressed in mm



PRS 60 R3815 060. 12

STEP 1 STEP 2 STEP 3 STEP 4 STEP 5

Esempio di designazione: Perno filettato con piastrina rettangolare R3815, filettatura M6, lunghezza 60 mm, in acciaio zincato
Example of code designation: Threaded stud with R3815 rectangular plate, M6 thread, 20mm length, zinc-plated steel



PRS60R3815060.12

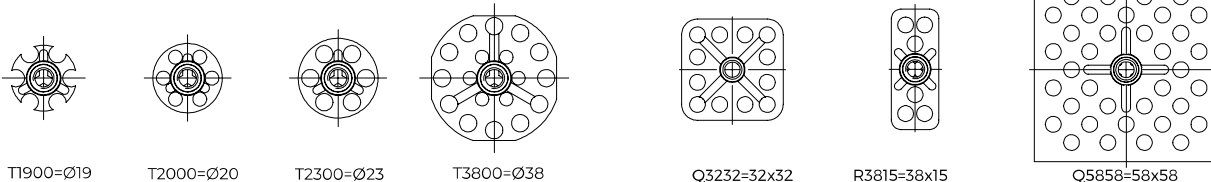
STEP 1 **BRC** SERIE/SERIES

Boccola filettata con piastrina cieca
Threaded bush with blind plate



STEP 2 **Altezze boccola (L)** 5 - 10 - 12 - 15 - 20 - 22 - 25
Bush height (L)

STEP 3 **Tipo piastrina**
Plate type

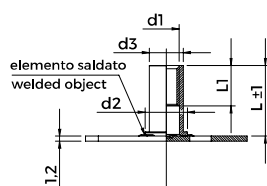


STEP 4 **Filetto (M)** M4 - M5 - M6 - M8 - M10
Thread (M)
Tolleranza 6H / Tolerance 6H

STEP 5 **Materiale** Acciaio Zincato .12 Zinc Plated Steel .12
Material Acciaio Inox 316 .51 316 Stainless Steel .51

| CODICE CODE | d1 Filetto Thread | d2 | d3 | CODICE CODE | d1 Filetto Thread | d2 | d3 |
|----------------|-------------------------|----|------|----------------|-------------------------|----|------|
| BRC_T1900040_ | | | | BRC_Q3232040_ | | | |
| BRC_T2000040_ | M 4 | 12 | 8,3 | BRC_R3815040_ | M 4 | 12 | 8,3 |
| BRC_T2300040_ | | | | BRC_Q5858040_ | | | |
| BRC_T3800040_ | | | | BRC_Q3232050_ | | | |
| BRC_T1900050_ | | | | BRC_R3815050_ | M 5 | 13 | 9,6 |
| BRC_T2000050_ | M 5 | 13 | 9,6 | BRC_Q5858050_ | | | |
| BRC_T2300050_ | | | | BRC_Q3232060_ | | | |
| BRC_T3800050_ | | | | BRC_R3815060_ | M 6 | 13 | 9,6 |
| BRC_T1900060_ | | | | BRC_Q5858060_ | | | |
| BRC_T2000060_ | M 6 | 13 | 9,6 | BRC_Q3232080_ | | | |
| BRC_T2300060_ | | | | BRC_R3815080_ | M 8 | 15 | 11,0 |
| BRC_T3800060_ | | | | BRC_Q5858080_ | | | |
| BRC_T2300080_ | M 8 | 15 | 11,0 | BRC_Q3232100_ | | | |
| BRC_T3800080_ | | | | BRC_R3815100_ | M 10 | 16 | 12,6 |
| BRC_T2300100_ | M 10 | 16 | 12,6 | BRC_Q5858100_ | | | |
| BRC_T3800100_ | | | | | | | |

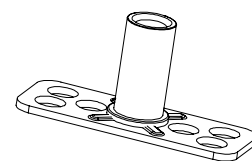
N.B: L1= tratto utile filetto (max 3 volte ø) / NB L1= threaded length (max 3 times ø)
Le dimensioni sono indicative, non vincolanti, espresse in mm - Non binding dimensions, expressed in mm



BRC 15 R3815 060. 12

STEP 1 **STEP 2** **STEP 3** **STEP 4** **STEP 5**

Esempio di designazione: Boccola filettata con piastrina cieca rettangolare R3815, filettatura M6, altezza 15 mm, in acciaio zincato
Example of code designation: Threaded bush with R3815 rectangular blind plate, M6 thread, 15mm length, zinc-plated steel



BRC15R3815060.12

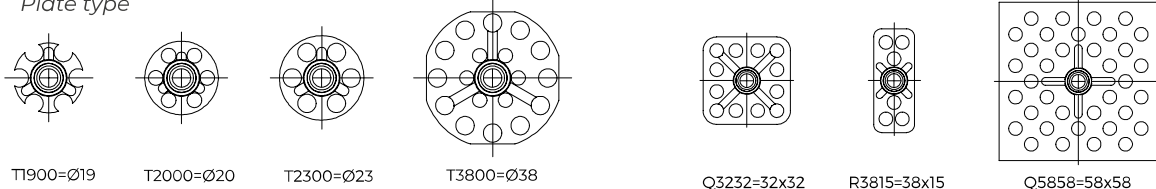
STEP 1 **BRP** SERIE/SERIES

Boccola filettata con piastrina passante
Threaded bush with through-hole plate



STEP 2 **Altezze boccola (L)** 5 - 10 - 12 - 15 - 20 - 22 - 25
Bush height (L)

STEP 3 **Tipo piastrina**
Plate type

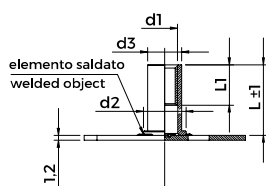


STEP 4 **Filetto (M)** M4 - M5 - M6 - M8 - M10
Thread (M) Tolleranza 6H / Tolerance 6H

STEP 5 **Materiale** Acciaio Zincato .12 Zinc Plated Steel .12
Material Acciaio Inox 316 .51 316 Stainless Steel .51

| CODICE CODE | d1 Filetto Thread | d2 | d3 | CODICE CODE | d1 Filetto Thread | d2 | d3 |
|----------------|-------------------------|----|------|----------------|-------------------------|----|------|
| BRP_T1900040._ | | | | BRP_Q3232040._ | | | |
| BRP_T2000040._ | M 4 | 12 | 8,3 | BRP_R3815040._ | M 4 | 12 | 8,3 |
| BRP_T2300040._ | | | | BRP_Q5858040._ | | | |
| BRP_T3800040._ | | | | BRP_Q3232050._ | | | |
| BRP_T1900050._ | | | | BRP_R3815050._ | M 5 | 13 | 9,6 |
| BRP_T2000050._ | M 5 | 13 | 9,6 | BRP_Q5858050._ | | | |
| BRP_T2300050._ | | | | BRP_Q3232060._ | | | |
| BRP_T3800050._ | | | | BRP_R3815060._ | M 6 | 13 | 9,6 |
| BRP_T1900060._ | | | | BRP_Q5858060._ | | | |
| BRP_T2000060._ | M 6 | 13 | 9,6 | BRP_Q3232080._ | | | |
| BRP_T2300060._ | | | | BRP_R3815080._ | M 8 | 15 | 11,0 |
| BRP_T3800060._ | | | | BRP_Q5858080._ | | | |
| BRP_T2300080._ | M 8 | 15 | 11,0 | BRP_Q3232100._ | | | |
| BRP_T3800080._ | | | | BRP_R3815100._ | M 10 | 16 | 12,6 |
| BRP_T2300100._ | M 10 | 16 | 12,6 | BRP_Q5858100._ | | | |
| BRP_T3800100._ | | | | | | | |

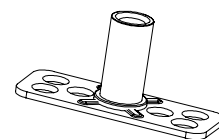
N.B: L1= tratto utile filetto (max 3 volte ø) / NB L1= threaded length (max 3 times ø)
Le dimensioni sono indicative, non vincolanti, espresse in mm - Dimensions are indicative and not binding, expressed in mm



BRP 15 R3815 060. 12

STEP 1 STEP 2 STEP 3 STEP 4 STEP 5

Esempio di designazione: Boccola filettata con piastrina passante rettangolare R3815, filettatura M6, altezza 15 mm, in acciaio zincato
Example of code designation: Threaded bush with R3815 rectangular through-hole plate, M6 thread, 15mm length, zinc-plated steel



BRP15R3815060.12

STEP 1 **DFC SERIE/SERIES**

 Dado flangiato con piastrina cieca
 Flanged nut with blind plate

STEP 2 **Altezze dado (L)** 4,3 - 4,8 - 5,4
 Nut height (L)

STEP 3 **Tipo piastrina**
 Plate type

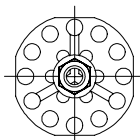

T1900=Ø19



T2000=Ø20



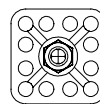
T2300=Ø23



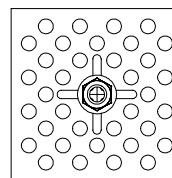
T3800=Ø38



R3815=38x15



Q3232=32x32



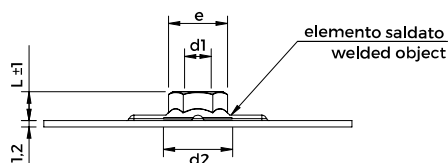
Q5858=58x58

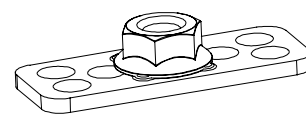

STEP 4 **Filetto (M)** M4 - M5 - M6
 Thread (M) Tolleranza 6H / Tolerance 6H

STEP 5 **Materiale** Acciaio Zincato .12 Zinc Plated Steel .12
 Material Acciaio Inox 316 .51 316 Stainless Steel .51

| CODICE CODE | d1 Filetto Thread | Chiave esagono Hex Key | e | d2 | L | CODICE CODE | d1 Filetto Thread | Chiave esagono Hex Key | e | d2 | L |
|-----------------|-------------------------|------------------------------|------|-------|-----|-----------------|-------------------------|------------------------------|------|-------|-----|
| DFC04T1900040._ | | | | | | DFC04R3815040._ | | | | | |
| DFC04T2000040._ | M 4 | 7 | 7,8 | 9,10 | 4,3 | DFC04Q3232040._ | M 4 | 7 | 7,8 | 9,10 | 4,3 |
| DFC04T2300040._ | | | | | | DFC04Q5858040._ | | | | | |
| DFC04T3800040._ | | | | | | DFC05R3815050._ | | | | | |
| DFC05T1900050._ | | | | | | DFC05Q3232050._ | M 5 | 8 | 8,9 | 10,50 | 4,8 |
| DFC05T2000050._ | M 5 | 8 | 8,9 | 10,50 | 4,8 | DFC05Q5858050._ | | | | | |
| DFC05T2300050._ | | | | | | DFC06R3815060._ | | | | | |
| DFC05T3800050._ | | | | | | DFC06Q3232060._ | M 6 | 10 | 11,1 | 12,95 | 5,4 |
| DFC06T1900060._ | | | | | | DFC06Q5858060._ | | | | | |
| DFC06T2000060._ | M 6 | 10 | 11,1 | 12,95 | 5,4 | | | | | | |
| DFC06T2300060._ | | | | | | | | | | | |
| DFC06T3800060._ | | | | | | | | | | | |

Le dimensioni sono indicative, non vincolanti, espresse in mm - Dimensions are indicative and not binding, expressed in mm


DFC 06 R3815 060. 12
STEP 1 **STEP 2** **STEP 3** **STEP 4** **STEP 5**

 Esempio di designazione: Dado filettato flangiato con piastrina cieca rettangolare R3815, filettatura M6, altezza 5,4 mm, in acciaio zincato
 Example of code designation: Flanged threaded nut with R3815 rectangular blind plate, M6 thread, 5,4mm height, zinc-plated steel


DFC06R3815060.12

STEP 1 **DFP** SERIE/SERIES

 Dado flangiato con piastrina passante
Flanged nut with through-hole plate
STEP 2 **Altezze dado (L)** 4,3 - 4,8 - 5,4
Nut height (L)
STEP 3 **Tipo piastrina**
Plate type

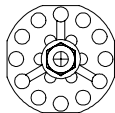

T1900=Ø19



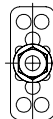
T2000=Ø20



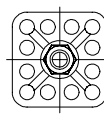
T2300=Ø23



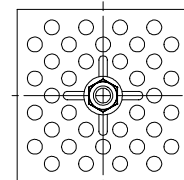
T3800=Ø38



R3815=38x15



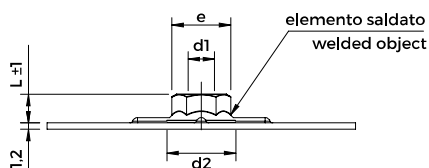
Q3232=32x32

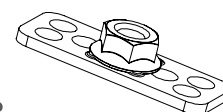


Q5858=58x58

STEP 4 **Filetto (M)** M4 - M5 - M6
Thread (M) Tolleranza 6H / *Tolerance 6H*
STEP 5 **Materiale** Acciaio Zincato .12 Zinc Plated Steel .12
Material Acciaio Inox 316 .51 316 Stainless Steel .51

| CODICE CODE | d1 Filetto Thread | Chiave esagono Hex Key | d2 | e | L | CODICE CODE | d1 Filetto Thread | Chiave esagono Hex Key | d2 | e | L |
|-----------------|-------------------------|------------------------------|-------|------|-----|-----------------|-------------------------|------------------------------|-------|------|-----|
| DFP04T1900040._ | | | | | | DFP04R3815040._ | | | | | |
| DFP04T2000040._ | M 4 | 7 | 9,10 | 7,8 | 4,3 | DFP04Q3232040._ | M 4 | 7 | 9,10 | 7,8 | 4,3 |
| DFP04T2300040._ | | | | | | DFP04Q5858040._ | | | | | |
| DFP04T3800040._ | | | | | | DFP05R3815050._ | | | | | |
| DFP05T1900050._ | | | | | | DFP05Q3232050._ | M 5 | 8 | 10,50 | 8,9 | 4,8 |
| DFP05T2000050._ | M 5 | 8 | 10,50 | 8,9 | 4,8 | DFP05Q5858050._ | | | | | |
| DFP05T2300050._ | | | | | | DFP06R3815060._ | | | | | |
| DFP05T3800050._ | | | | | | DFP06Q3232060._ | M 6 | 10 | 12,95 | 11,1 | 5,4 |
| DFP06T1900060._ | | | | | | DFP06Q5858060._ | | | | | |
| DFP06T2000060._ | M 6 | 10 | 12,95 | 11,1 | 5,4 | | | | | | |
| DFP06T2300060._ | | | | | | | | | | | |
| DFP06T3800060._ | | | | | | | | | | | |

 Le dimensioni sono indicative, non vincolanti, espresse in mm - *Dimensions are indicative and not binding, expressed in mm*

DFP 06 R3815 060.12
STEP 1 **STEP 2** **STEP 3** **STEP 4** **STEP 5**

 Esempio di designazione: Dado filettato flangiato con piastrina passante rettangolare R3815, filettatura M6, altezza 5,4 mm, in acciaio zincato
Example of code designation: Flanged threaded nut with R3815 rectangular through-hole plate, M6 thread, 5,4mm height, zinc-plated steel


DFP06R3815060.12

STEP 1 **DRC** SERIE/SERIES

 Dado con piastrina cieca
 Nut with blind plate

STEP 2 **Altezze dado (L)** 3,2 - 4,0 - 5,0 - 6,5 - 8,0
 Nut height (L)

STEP 3 **Tipo piastrina**
 Plate type

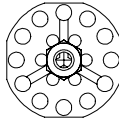

T1900=Ø19



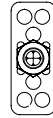
T2000=Ø20



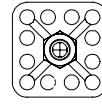
T2300=Ø23



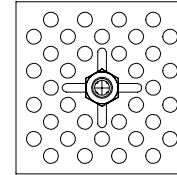
T3800=Ø38



R3815=38x15



Q3232=32x32



Q5858=58x58

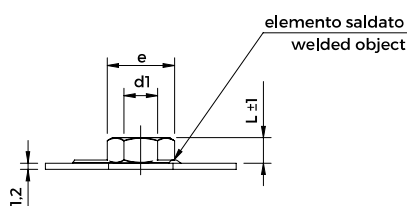
STEP 4 **Filetto (M)** M4 - M5 - M6 - M8 - M10
 Thread (M) Tolleranza 6H / Tolerance 6H

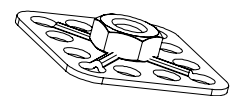
 Per le filettature M4, M5 e M6 vedere articoli standard su scheda DFC
 For M4, M5 and M6 threads, see standard products on DFC technical sheet

STEP 5 **Materiale** Acciaio Zincato .12 Zinc Plated Steel .12
 Material Acciaio Inox 316 .51 316 Stainless Steel .51

| CODICE CODE | d1 Filetto Thread | Chiave esagono Hex Key | e | L | CODICE CODE | d1 Filetto Thread | Chiave esagono Hex Key | e | L |
|-----------------|-------------------------|------------------------------|------|-----|-----------------|-------------------------|------------------------------|------|-----|
| DRC03T1900040._ | M 4 | 7 | 7,8 | 3,2 | DRC03R3815040._ | M 4 | 7 | 7,8 | 3,2 |
| DRC03T2000040._ | | | | | DRC03Q3232040._ | | | | |
| DRC03T2300040._ | | | | | DRC03Q5858040._ | | | | |
| DRC03T3800040._ | | | | | DRC04R3815050._ | | | | |
| DRC04T1900050._ | M 5 | 8 | 8,9 | 4,0 | DRC04Q3232050._ | M 5 | 8 | 8,9 | 4,0 |
| DRC04T2000050._ | | | | | DRC04Q5858050._ | | | | |
| DRC04T2300050._ | | | | | DRC05R3815060._ | | | | |
| DRC04T3800050._ | | | | | DRC05Q3232060._ | | | | |
| DRC05T1900060._ | M 6 | 10 | 11,1 | 5,0 | DRC05Q5858060._ | M 6 | 10 | 11,1 | 5,0 |
| DRC05T2000060._ | | | | | DRC06R3815080._ | | | | |
| DRC05T2300060._ | | | | | DRC06Q3232080._ | | | | |
| DRC05T3800060._ | | | | | DRC06Q5858080._ | | | | |
| DRC06T1900080._ | M 8 | 13 | 14,4 | 6,5 | DRC08R3815100._ | M 8 | 13 | 14,4 | 6,5 |
| DRC06T2000080._ | | | | | DRC08Q3232100._ | | | | |
| DRC06T2300080._ | | | | | DRC08Q5858100._ | | | | |
| DRC06T3800080._ | | | | | | | | | |
| DRC08T2000100._ | M 10 | 17 | 19,0 | 8,0 | | M 10 | 17 | 19,0 | 8,0 |
| DRC08T2300100._ | | | | | | | | | |
| DRC08T3800100._ | | | | | | | | | |

Le dimensioni sono indicative, non vincolanti, espresse in mm - Dimensions are indicative and not binding, expressed in mm


DRC 04 Q3232 050. 12
STEP 1 **STEP 2** **STEP 3** **STEP 4** **STEP 5**

 Esempio di designazione: Dado filettato con piastrina cieca quadrata Q3232, filettatura M5, altezza 4 mm, in acciaio zincato
 Example of code designation: Threaded nut with Q3232 square blind plate, M5 thread, 4mm height, zinc-plated steel


DRC04Q3232050.12

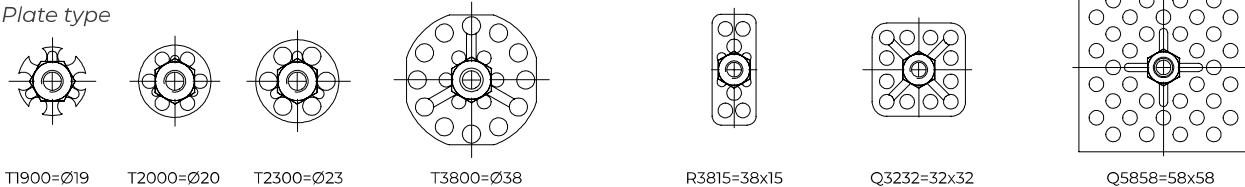
STEP 1 **DRP** SERIE/SERIES

Dado con piastrina passante
Nut with through-hole plate



STEP 2 **Altezze dado (L)** 3,2 - 4,0 - 5,0 - 6,5 - 8,0
Nut height (L)

STEP 3 **Tipo piastrina**
Plate type

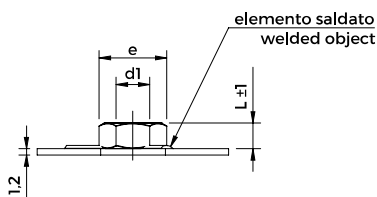


STEP 4 **Filetto (M)** M4 - M5 - M6 - M8 - M10
Thread (M)
Tolleranza 6H / Tolerance 6H
Per le filettature M4, M5 e M6 vedere articoli standard su scheda DFP
For M4, M5 and M6 threads, see standard products on DFP technical sheet

STEP 5 **Materiale** Acciaio Zincato .12 Zinc Plated Steel .12
Material Acciaio Inox 316 .51 316 Stainless Steel .51

| CODICE CODE | d1 Filetto Thread | Chiave esagono Hex Key | e | L | CODICE CODE | d1 Filetto Thread | Chiave esagono Hex Key | e | L |
|-----------------|-------------------------|------------------------------|------|-----|-----------------|-------------------------|------------------------------|------|-----|
| DRP03T1900040._ | | | | | DRP03R3815040._ | | | | |
| DRP03T2000040._ | M 4 | 7 | 7,8 | 3,2 | DRP03Q3232040._ | M 4 | 7 | 7,8 | 3,2 |
| DRP03T2300040._ | | | | | DRP03Q5858040._ | | | | |
| DRP03T3800040._ | | | | | DRP04R3815050._ | | | | |
| DRP04T1900050._ | | | | | DRP04Q3232050._ | M 5 | 8 | 8,9 | 4,0 |
| DRP04T2000050._ | M 5 | 8 | 8,9 | 4,0 | DRP04Q5858050._ | | | | |
| DRP04T2300050._ | | | | | DRP05R3815060._ | | | | |
| DRP04T3800050._ | | | | | DRP05Q3232060._ | M 6 | 10 | 11,1 | 5,0 |
| DRP05T1900060._ | | | | | DRP05Q5858060._ | | | | |
| DRP05T2000060._ | M 6 | 10 | 11,1 | 5,0 | DRP06R3815080._ | | | | |
| DRP05T2300060._ | | | | | DRP06Q3232080._ | M 8 | 13 | 14,4 | 6,5 |
| DRP05T3800060._ | | | | | DRP06Q5858080._ | | | | |
| DRP06T2000080._ | | | | | DRP08R3815100._ | | | | |
| DRP06T2300080._ | M 8 | 13 | 14,4 | 6,5 | DRP08Q3232100._ | M 10 | 17 | 19,0 | 8,0 |
| DRP06T3800080._ | | | | | DRP08Q5858100._ | | | | |
| DRP08T2300100._ | M 10 | 17 | 19,0 | 8,0 | | | | | |
| DRP08T3800100._ | | | | | | | | | |

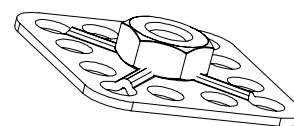
Le dimensioni sono indicative, non vincolanti, espresse in mm - Dimensions are indicative and not binding, expressed in mm



DRP 04 Q3232 050. 12

STEP 1 **STEP 2** **STEP 3** **STEP 4** **STEP 5**

Esempio di designazione: Dado filettato con piastrina passante quadrata, Q3232 filettatura M5, altezza 4 mm, in acciaio zincato
Example of code designation: Threaded nut with Q3232 square through-hole plate, M5 thread, 4mm height, zinc-plated steel



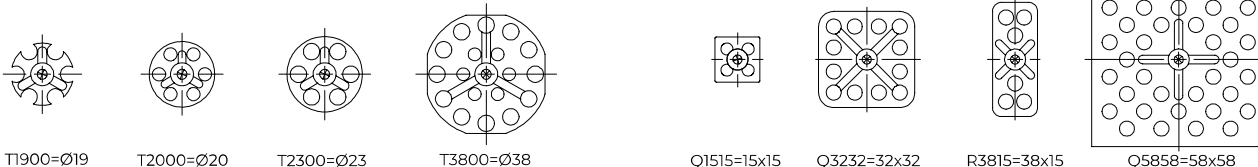
DRP04Q3232050.12

STEP 1 **CR** SERIE/SERIES

Chiodo con piastrina
Nail with plate

STEP 2 **Lunghezze chiodo (L)** 50 - 60 - 70 - 80 - 90 - 100
Nail lenght (L)

STEP 3 **Tipo piastrina**
Plate type

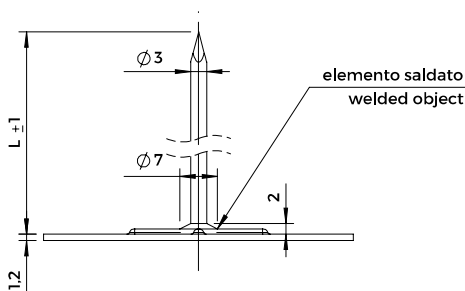


STEP 4 **Diametro chiodo** 3 mm
Nail diameter

STEP 5 **Materiale** Acciaio Inox 316 .51 316 Stainless Steel .51
Material

| CODICE CODE | Lunghezza chiodo L±1mm Nail lenght L±1mm | | | | | | CODICE CODE | Lunghezza chiodo L±1mm Nail lenght L±1mm | | | | | |
|----------------|---------------------------------------------|----|----|----|----|-----|----------------|---------------------------------------------|--|--|--|--|--|
| CR_T1900030.51 | | | | | | | CR_Q1515030.51 | | | | | | |
| CR_T2000030.51 | 50 | 60 | 70 | 80 | 90 | 100 | CR_Q3232030.51 | | | | | | |
| CR_T2300030.51 | | | | | | | CR_R3815030.51 | | | | | | |
| CR_T3800030.51 | | | | | | | CR_Q5858030.51 | | | | | | |

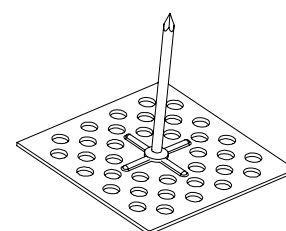
Le dimensioni sono indicative, non vincolanti, espresse in mm – Dimensions are indicative and not binding, expressed in mm



CR 70 Q5858 030. 51

STEP 1 **STEP 2** **STEP 3** **STEP 4** **STEP 5**

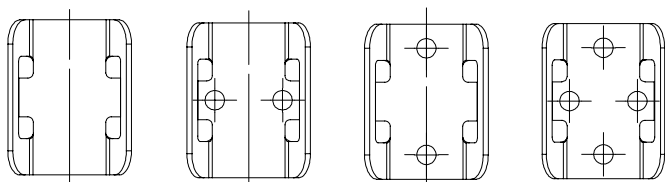
Esempio di designazione: Chiodo con piastrina quadra Q5858, lunghezza 70 mm, in acciaio inox 316
Example of code designation: Nail with Q5858 square plate, 70mm lenght, 316 stainless steel



CR70Q5858030.51

PFR08 SERIE/SERIES

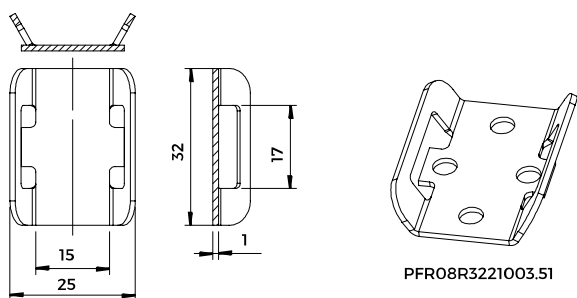
Piastrina passafascetta
Cable tie mount plate



PFR08R3221000.51 PFR08R3221001.51 PFR08R3221002.51 PFR08R3221003.51

Materiale
Material

Acciaio Inox 316
316 Stainless Steel

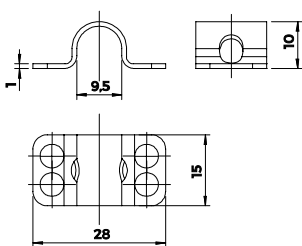


PFR08R3221003.51

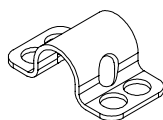
Le dimensioni sono indicative, non vincolanti, espresse in mm – Dimensions are indicative and not binding, expressed in mm

PFR10 SERIE/SERIES

Piastrina passafascetta
Cable tie saddle plate



PFR10R2815001.51



PFR10R2815001.51

Materiale
Material

Acciaio Inox 316
316 Stainless Steel

Le dimensioni sono indicative, non vincolanti, espresse in mm – Dimensions are indicative and not binding, expressed in mm

STEP 1 **PRY** SERIE/SERIES

 Perno filettato con piastrina con piedini
 Threaded stud with plate and round spacers

STEP 2 **Lunghezza perno (L)** 10* - 12 - 16 - 20 - 25 - 30 - 40
 Stud lenght (L)

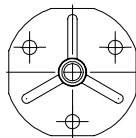
 * Non disponibile nella versione inox 316
 * 316 Stainless Steel not available
 Per lunghezza perno oltre 40mm consultare la scheda PRSY
 For stud lenght over 40mm, see PRSY technical sheet

STEP 3 **Tipo piastrina**
 Plate type


Y2000=Ø20



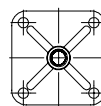
Y2300=Ø23



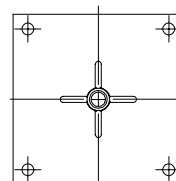
Y3800=Ø38



Y3815=38x15



Y3232=32x32



Y5858=58x58

STEP 4 **Filetto (M)**
 Thread (M)

 M4 - M5 - M6 - M8
 Tolleranza 6g / Tolerance 6g
 Per filetto M10 consultare la scheda PRSY
 For M10 thread, see PRSY technical sheet

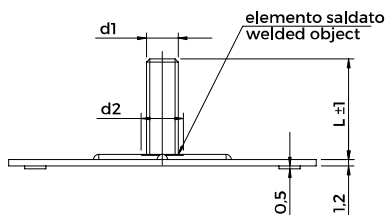
STEP 5 **Materiale**
 Material

 Acciaio Zincato .12
 Acciaio Inox 316 Elettrolucidato .56

 Zinc Plated Steel .12
 Electropolished 316 Stainless Steel .56

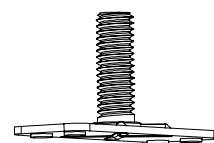
| CODICE CODE | d1 Filetto Thread | d2 Acciaio .12 Steel .12 | d2 Inox .56 Stainless Steel .56 | CODICE CODE | d1 Filetto Thread | d2 Acciaio .12 Steel .12 | d2 Inox .56 Stainless Steel .56 |
|----------------|-------------------------|--------------------------------|------------------------------------------|----------------|-------------------------|--------------------------------|------------------------------------------|
| | PR_Y2000040._ | | | | | PR_Y3815040._ | |
| PR_Y2300040._ | M 4 | 5,5 | 8,5 | PR_Y3232040._ | M 4 | 5,5 | 8,5 |
| PR_Y3800040._ | | | | PR_Y5858040._ | | | |
| PR_Y2000050._ | | | | PR_Y3815050._ | | | |
| PR_Y2300050._ | M 5 | 6,5 | 9,8 | PR_Y3232050._ | M 5 | 6,5 | 9,8 |
| PR_Y3800050._ | | | | PR_Y5858050._ | | | |
| PR_Y2000060._ | | | | PR_Y3815060._ | | | |
| PR_Y2300060._ | M 6 | 7,5 | 9,8 | PR_Y3232060._ | M 6 | 7,5 | 9,8 |
| PR_Y3800060._ | | | | PR_Y5858060._ | | | |
| PR_Y2000080._ | | | | PR_Y3815080._ | | | |
| PR_Y2300080._ | M 8 | 10,0 | 11,5 | PR_Y3232080._ | M 8 | 10,0 | 11,5 |
| PR_Y3800080._ | | | | PR_Y5858080._ | | | |

Le dimensioni sono indicative, non vincolanti, espresse in mm - Dimensions are indicative and not binding, expressed in mm


PR 20 Y3815 060. 12
STEP 1 **STEP 2** **STEP 3** **STEP 4** **STEP 5**

Esempio di designazione: Perno filettato con piastrina rettangolare Y3815, filettatura M6, lunghezza 20 mm, in acciaio zincato

Example of code designation: Threaded stud with Y3815 rectangular plate, M6 thread, 20mm lenght, zinc-plated steel



PR20Y3815060.12

STEP 1 **PRSY** SERIE/SERIES

Perno filettato con testa svasata con piastrina con piedini
 Threaded stud with countersunk head and plate with round spacers

STEP 2 **Lunghezze perno (L)** 45 - 50 - 60 - 70 - 80 - 90 - 100
 Stud Length (L)

Per lunghezze perno inferiori a 45 mm consultare la scheda PRY
 For stud length under 45mm, see PRY technical sheet

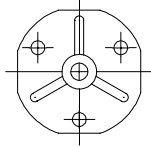
STEP 3 **Tipo piastrina**
 Plate type



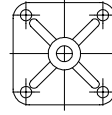
Y2000=Ø20



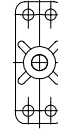
Y2300=Ø23



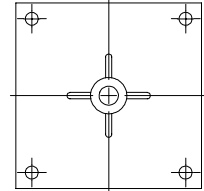
Y3800=Ø38



Y3232=32x32



Y3815=38x15



Y5858=58x58

STEP 4 **Filetto (M)**
 Thread (M)

M5 - M6 - M8 - M10
 Tolleranza 6g / Tolerance 6g

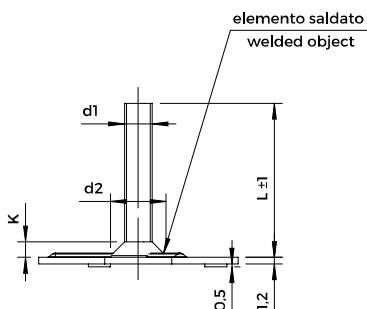
STEP 5 **Materiale**
 Material

Acciaio Zincato .12
 Acciaio Inox 316 Elettrolucidato .56

Zinc Plated Steel .12
 Electropolished 316 Stainless Steel .56

| CODICE CODE | d1 Filetto Thread | d2 (max) | K +0,50 0 | CODICE CODE | d1 Filetto Thread | d2 (max) | K +0,50 0 |
|----------------|-------------------------|-------------|-----------------|----------------|-------------------------|-------------|-----------------|
| PRS_Y2000050_ | | | | PRS_Y3232050_ | | | |
| PRS_Y2300050_ | M 5 | 10 | 2,8 | PRS_Y3815050_ | M 5 | 10 | 2,8 |
| PRS_Y3800050_ | | | | PRS_Y5858050_ | | | |
| PRS_Y2000060_ | | | | PRS_Y3232060_ | | | |
| PRS_Y2300060_ | M 6 | 12 | 3,3 | PRS_Y3815060_ | M 6 | 12 | 3,3 |
| PRS_Y3800060_ | | | | PRS_Y5858060_ | | | |
| PRS_Y2000080_ | | | | PRS_Y3232080_ | | | |
| PRS_Y2300080_ | M 8 | 16 | 4,4 | PRS_Y3815080_ | M 8 | 16 | 4,4 |
| PRS_Y3800080_ | | | | PRS_Y5858100_ | M 10 | 20 | 5,5 |
| PRS_Y3800100_ | M 10 | 20 | 5,5 | | | | |

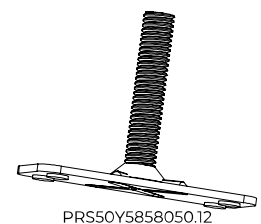
Le dimensioni sono indicative, non vincolanti, espresse in mm – Dimensions are indicative and not binding, expressed in mm



PR50 Y5858 050.12

STEP 1 STEP 2 STEP 3 STEP 4 STEP 5

Esempio di designazione: Perno filettato con piastrina rettangolare Y3815, filettatura M5, lunghezza 50 mm, in acciaio zincato.
 Example of code designation: Threaded stud with Y3815 rectangular plate, M5 thread, 50mm length, zinc-plated steel



PR50Y5858050.12

STEP 1 **BRCY** SERIE/SERIES

Boccola filettata con piastrina cieca con piedini
 Threaded bush with blind plate and round spacers

STEP 2 **Altezze boccola (L)** 5 - 10 - 12 - 15 - 20 - 22 - 25
 Bush height (L)

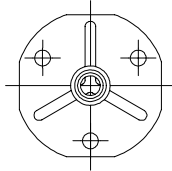
STEP 3 **Tipo piastrina**
 Plate type



Y2000=ø20



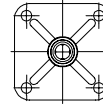
Y2300=ø23



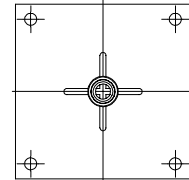
Y3800=ø38



Y3815=38x15



Y3232=32x32



Y5858=58x58

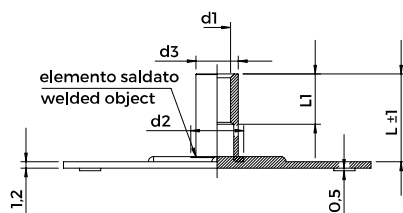
STEP 4 **Filetto (M)** M4 - M5 - M6 - M8 - M10
 Thread (M)
 Tolleranza 6H / Tolerance 6H

STEP 5 **Materiale** Acciaio Zincato .12 Zinc Plated Steel .12
 Material Acciaio Inox 316 Elettrolucidato .56 Electropolished 316 Stainless Steel .56

| CODICE CODE | d1 Filetto Thread | d2 | d3 | CODICE CODE | d1 Filetto Thread | d2 | d3 |
|----------------|-------------------------|----|------|----------------|-------------------------|----|------|
| BRC_Y2000040_ | | | | BRC_Y3815040_ | | | |
| BRC_Y2300040_ | M 4 | 12 | 8,3 | BRC_Y3232040_ | M 4 | 12 | 8,3 |
| BRC_Y3800040_ | | | | BRC_Y5858040_ | | | |
| BRC_Y2000050_ | | | | BRC_Y3815050_ | | | |
| BRC_Y2300050_ | M 5 | 13 | 9,6 | BRC_Y3232050_ | M 5 | 13 | 9,6 |
| BRC_Y3800050_ | | | | BRC_Y5858050_ | | | |
| BRC_Y2000060_ | | | | BRC_Y3815060_ | | | |
| BRC_Y2300060_ | M 6 | 13 | 9,6 | BRC_Y3232060_ | M 6 | 13 | 9,6 |
| BRC_Y3800060_ | | | | BRC_Y5858060_ | | | |
| BRC_Y2000080_ | | | | BRC_Y3815080_ | | | |
| BRC_Y2300080_ | M 8 | 15 | 11,0 | BRC_Y3232080_ | M 8 | 15 | 11,0 |
| BRC_Y3800080_ | | | | BRC_Y5858080_ | | | |
| BRC_Y2000100_ | | | | BRC_Y3815100_ | | | |
| BRC_Y2300100_ | M 10 | 16 | 12,6 | BRC_Y3232100_ | M 10 | 16 | 12,6 |
| BRC_Y3800100_ | | | | BRC_Y5858100_ | | | |

N.B: L1= tratto utile filetto (max 3 volte ø) / NB L1= threaded length (max 3 times ø)

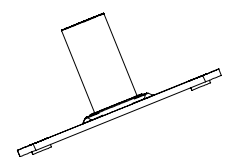
Le dimensioni sono indicative, non vincolanti, espresse in mm – Dimensions are indicative and not binding, expressed in mm



BRC 12 Y3815 050. 12

STEP 1 **STEP 2** **STEP 3** **STEP 4** **STEP 5**

Esempio di designazione: Boccola filettata con piastrina cieca rettangolare Y3815, filettatura M5, altezza 12 mm, in acciaio zincato
 Example of code designation: Threaded bush with Y3815 rectangular blind plate, M5 thread, 12mm length, zinc-plated steel



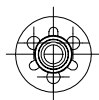
BRC12Y3815050.12

STEP 1 BRPY SERIE/SERIES

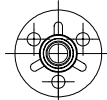
Boccola filettata con piastrina passante con piedini
Threaded bush with through-hole plate and round spacers

STEP 2 **Altezze boccola (L)** 5 - 10 - 12 - 15 - 20 - 22 - 25
Bush height (L)

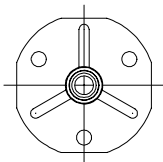
STEP 3 **Tipo piastrina**
Plate type



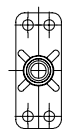
Y2000=ø20



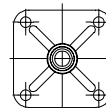
Y2300=ø23



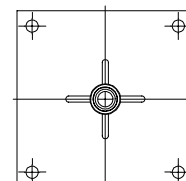
Y3800=ø38



Y3815=38x15



Y3232=32x32



Y5858=58x58

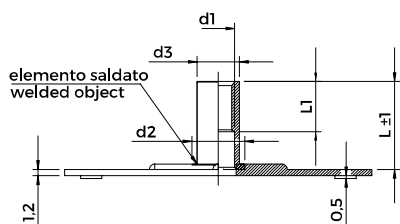
STEP 4 **Filetto (M)** M4 - M5 - M6 - M8 - M10
Thread (M)
Tolleranza 6H / Tolerance 6H

STEP 5 **Materiale** Acciaio Zincato .12 Zinc Plated Steel .12
Material Acciaio Inox 316 Elettrolucidato .56 Electropolished 316 Stainless Steel .56

| CODICE CODE | d1 Filetto Thread | d2 | d3 | CODICE CODE | d1 Filetto Thread | d2 | d3 |
|----------------|-------------------------|----|------|----------------|-------------------------|----|------|
| BRP_Y2000040._ | | | | BRP_Y3815040._ | | | |
| BRP_Y2300040._ | M 4 | 12 | 8,3 | BRP_Y3232040._ | M 4 | 12 | 8,3 |
| BRP_Y3800040._ | | | | BRP_Y5858040._ | | | |
| BRP_Y2000050._ | | | | BRP_Y3815050._ | | | |
| BRP_Y2300050._ | M 5 | 13 | 9,6 | BRP_Y3232050._ | M 5 | 13 | 9,6 |
| BRP_Y3800050._ | | | | BRP_Y5858050._ | | | |
| BRP_Y2000060._ | | | | BRP_Y3815060._ | | | |
| BRP_Y2300060._ | M 6 | 13 | 9,6 | BRP_Y3232060._ | M 6 | 13 | 9,6 |
| BRP_Y3800060._ | | | | BRP_Y5858060._ | | | |
| BRP_Y2300080._ | M 8 | 15 | 11,0 | BRP_Y3815080._ | | | |
| BRP_Y3800080._ | | | | BRP_Y3232080._ | M 8 | 15 | 11,0 |
| BRP_Y3800100._ | M 10 | 16 | 12,6 | BRP_Y5858080._ | | | |
| | | | | BRP_Y3232100._ | M 10 | 16 | 12,6 |
| | | | | BRP_Y5858100._ | | | |

N.B: L1= tratto utile filetto (max 3 volte ø) / NB L1= threaded length (max 3 times ø)

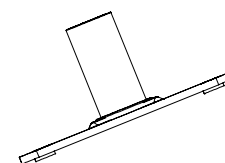
Le dimensioni sono indicative, non vincolanti, espresse in mm – Dimensions are indicative and not binding, expressed in mm



BRP 12 Y3815 050. 12

STEP 1 STEP 2 STEP 3 STEP 4 STEP 5

Esempio di designazione: Boccola filettata con piastrina passante rettangolare Y3815, filettatura M5, altezza 12 mm, in acciaio zincato
Example of code designation: Threaded bush with Y3815 rectangular through-hole plate, M5 thread, 12mm length, zinc-plated steel



BRP12Y3815050.12

STEP 1 **DFCY S** SERIE/SERIES

 Dado flangiato con piastrina cieca con piedini
 Flanged nut with blind plate and round spacers

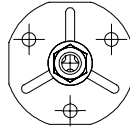
STEP 2 **Altezze dado (L)** 4,3 - 4,8 - 5,4
 Nut height (L)

STEP 3 **Tipo piastrina**
 Plate type

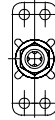

Y2000=Ø20



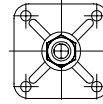
Y2300=Ø23



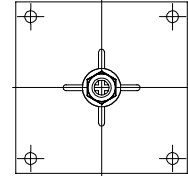
Y3800=Ø38



Y3815=38x15



Y3232=32x32



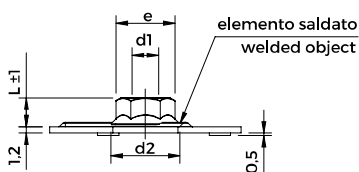
Y5858=58x58

STEP 4 **Filetto (M)** M4 - M5 - M6
 Thread (M) Tolleranza 6H / Tolerance 6H

STEP 5 **Materiale** Acciaio Zincato .12 Zinc Plated Steel .12
 Material Acciaio Inox 316 Elettrolucidato .56 Electropolished 316 Stainless Steel .56

| CODICE CODE | d1 Filetto Thread | Chiave esagono Hex Key | e | d2 | L | CODICE CODE | d1 Filetto Thread | Chiave esagono Hex Key | d2 | L |
|-----------------|-------------------------|------------------------------|------|-------|-----|-----------------|-------------------------|------------------------------|-------|-----|
| DFC04Y2000040._ | | | | | | DFC04Y3815040._ | | | | |
| DFC04Y2300040._ | M 4 | 7 | 7,8 | 9,10 | 4,3 | DFC04Y3232040._ | M 4 | 7 | 9,10 | 4,3 |
| DFC04Y3800040._ | | | | | | DFC04Y5858040._ | | | | |
| DFC05Y2000050._ | | | | | | DFC05Y3815050._ | | | | |
| DFC05Y2300050._ | M 5 | 8 | 8,9 | 10,50 | 4,8 | DFC05Y3232050._ | M 5 | 8 | 10,50 | 4,8 |
| DFC05Y3800050._ | | | | | | DFC05Y5858050._ | | | | |
| DFC06Y2000060._ | | | | | | DFC06Y3815060._ | | | | |
| DFC06Y2300060._ | M 6 | 10 | 11,1 | 12,95 | 5,4 | DFC06Y3232060._ | M 6 | 10 | 12,95 | 5,4 |
| DFC06Y3800060._ | | | | | | DFC06Y5858060._ | | | | |

Le dimensioni sono indicative, non vincolanti, espresse in mm – Dimensions are indicative and not binding, expressed in mm


DFC 05 Y3815 050. 12
STEP 1 STEP 2 STEP 3 STEP 4 STEP 5

 Esempio di designazione: Dado filettato flangiato con piastrina cieca rettangolare Y3815, filettatura M5, altezza 4,8 mm, in acciaio zincato
 Example of code designation: Flanged threaded nut with Y3815 rectangular blind plate, M5 thread, 4,8mm height, zinc-plated steel


DFC05Y3815050.12

STEP 1 DFPY SERIE/SERIES

Dado flangiato con piastrina passante con piedini
 Flanged nut with through-hole plate and round spacers



STEP 2 **Altezze dado (L)** 4,3 - 4,8 - 5,4
 Nut height (L)

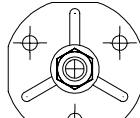
STEP 3 **Tipo piastrina**
 Plate type



Y2000=ø20



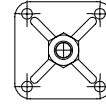
Y2300=ø23



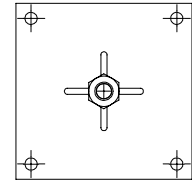
Y3800=ø38



Y3815=38x15



Y3232=32x32



Y5858=58x58

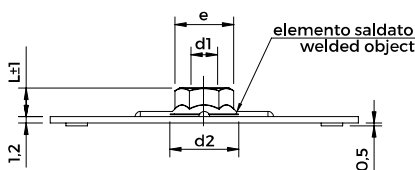
STEP 4 **Filetto (M)** M4 - M5 - M6
 Thread (M) Tolleranza 6H / Tolerance 6H

STEP 5 **Materiale** Acciaio Zincato .12 Zinc Plated Steel .12
 Material Acciaio Inox 316 Elettrolucidato .56 Electropolished 316 Stainless Steel .56

| CODICE CODE | d1 Filetto Thread | Chiave esagono Hex Key | e | d2 | L |
|-----------------|-------------------------|------------------------------|------|-------|-----|
| DFP04Y2000040._ | | | | | |
| DFP04Y2300040._ | M 4 | 7 | 7,8 | 9,10 | 4,3 |
| DFP04Y3800040._ | | | | | |
| DFP05Y2000050._ | | | | | |
| DFP05Y2300050._ | M 5 | 8 | 8,9 | 10,50 | 4,8 |
| DFP05Y3800050._ | | | | | |
| DFP06Y2300060._ | M 6 | 10 | 11,1 | 12,95 | 5,4 |
| DFP06Y3800060._ | | | | | |

| CODICE CODE | d1 Filetto Thread | Chiave esagono Hex Key | e | d2 | L |
|-----------------|-------------------------|------------------------------|------|-------|-----|
| DFP04Y3815040._ | | | | | |
| DFP04Y3232040._ | M 4 | 7 | 7,8 | 9,1 | 4,3 |
| DFP04Y5858040._ | | | | | |
| DFP05Y3815050._ | | | | | |
| DFP05Y3232050._ | M 5 | 8 | 8,9 | 10,5 | 4,8 |
| DFP05Y5858050._ | | | | | |
| DFP06Y3815060._ | | | | | |
| DFP06Y3232060._ | M 6 | 10 | 11,1 | 12,95 | 5,4 |
| DFP06Y5858060._ | | | | | |

Le dimensioni sono indicative, non vincolanti, espresse in mm - Dimensions are indicative and not binding, expressed in mm

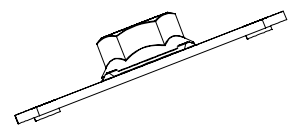


DFP 05 Y3815 050. 12

STEP 1 STEP 2 STEP 3 STEP 4 STEP 5

Esempio di designazione: Dado filettato flangiato con piastrina passante rettangolare Y3815, filettatura M5, altezza 4,8 mm, in acciaio zincato

Example of code designation: Flanged threaded nut with Y3815 rectangular through-hole plate, M5 thread, 4,8mm height, zinc-plated steel



DFP05Y3815050.12

STEP 1 **DRCY** SERIE/SERIES

 Dado con piastrina cieca con piedini
 Nut with blind plate and round spacers

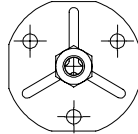
STEP 2 **Altezze dado (L)** 6,5 – 8,0
 Nut height (L)

STEP 3 **Tipo piastrina**
 Plate type

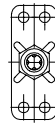

Y2000=ø20



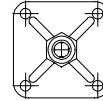
Y2300=ø23



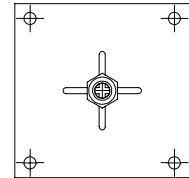
Y3800=ø38



Y3815=38x15



Y3232=32x32



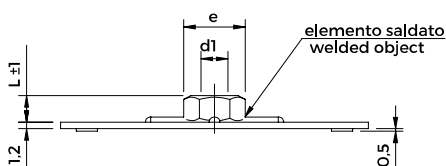
Y5858=58x58

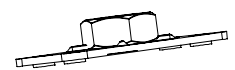
STEP 4 **Filetto (M)** M8 - M10
 Thread (M) Tolleranza 6H / Tolerance 6H

STEP 5 **Materiale** Acciaio Zincato .12 Zinc Plated Steel .12
 Material Acciaio Inox 316 Elettrolucidato .56 Electropolished 316 Stainless Steel .56

| CODICE CODE | d1 Filetto Thread | Chiave esagono Hex Key | e | L | CODICE CODE | d1 Filetto Thread | Chiave esagono Hex Key | e | L |
|-----------------|-------------------------|------------------------------|------|-----|-----------------|-------------------------|------------------------------|----|-----|
| DRC06Y2300080._ | M 8 | 13 | 14,4 | 6,5 | DRC06Y3815080._ | | | | |
| DRC06Y3800080._ | | | | | DRC06Y3232080._ | M 8 | 13 | 13 | 6,5 |
| DRC08Y2300100._ | M 10 | 17 | 19,0 | 8,0 | DRC06Y5858080._ | | | | |
| DRC08Y3800100._ | | | | | DRC08Y3815100._ | | | | |
| | | | | | DRC08Y3232100._ | M 10 | 17 | 17 | 8,0 |
| | | | | | DRC08Y5858100._ | | | | |

Le dimensioni sono indicative, non vincolanti, espresse in mm – Dimensions are indicative and not binding, expressed in mm


DRC 06 Y3815 080.12
STEP 1 **STEP 2** **STEP 3** **STEP 4** **STEP 5**

 Esempio di designazione: Dado filettato con piastrina cieca rettangolare Y3815, filettatura M8, altezza 6,5 mm, in acciaio zincato
 Example of code designation: Threaded nut with Y3815 rectangular blind plate, M8 thread, 6,5mm height, zinc-plated steel


DRC06 Y3815 080.12

STEP 1 DRPY SERIE/SERIES

Dado con piastrina passante con piedini
Nut with through-hole plate and round spacers

STEP 2 **Altezza dado (L)** 6,5 – 8,0
Nut height (L)

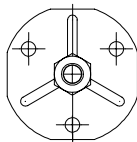
STEP 3 **Tipo piastrina**
Plate type



Y2000=ø20



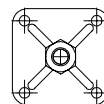
Y2300=ø23



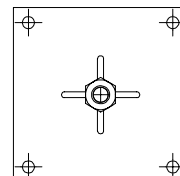
Y3800=ø38



Y3815=38x15



Y3232=32x32



Y5858=58x58

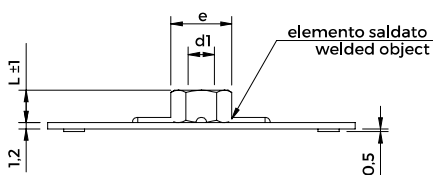
STEP 4 **Filetto (M)** M8 - M10
Thread (M) Tolleranza 6H / Tolerance 6H

STEP 5 **Materiale** Acciaio Zincato .12 Zinc Plated Steel .12
Material Acciaio Inox 316 Elettrolucidato .56 Electropolished 316 Stainless Steel .56

| CODICE CODE | d1 Filetto Thread | Chiave esagono Hex Key | e | L |
|-----------------|-------------------------|------------------------------|------|-----|
| DRP06Y2300080._ | M 8 | 13 | 14,4 | 6,5 |
| DRP06Y3800080._ | M 8 | 13 | 14,4 | 6,5 |
| DRP08Y3800100._ | M 10 | 17 | 19,0 | 8,0 |

| CODICE CODE | d1 Filetto Thread | Chiave esagono Hex Key | e | L |
|-----------------|-------------------------|------------------------------|------|-----|
| DRP06Y3815080._ | M 8 | 13 | 14,4 | 6,5 |
| DRP06Y3232080._ | M 8 | 13 | 14,4 | 6,5 |
| DRP06Y5858080._ | M 8 | 13 | 14,4 | 6,5 |
| DRP08Y3815100._ | M 10 | 17 | 19,0 | 8,0 |
| DRP08Y3232100._ | M 10 | 17 | 19,0 | 8,0 |
| DRP08Y5858100._ | M 10 | 17 | 19,0 | 8,0 |

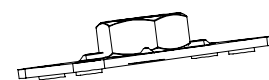
Le dimensioni sono indicative, non vincolanti, espresse in mm – Dimensions are indicative and not binding, expressed in mm



DRP 06 Y3815 080. 12

STEP 1 STEP 2 STEP 3 STEP 4 STEP 5

Esempio di designazione: Dado filettato con piastrina passante rettangolare Y3815, filettatura M8, altezza 6,5 mm, in acciaio zincato
Example of code designation: Threaded nut with Y3815 rectangular through-hole plate, M8 thread, 6,5 mm height, zinc-plated steel



DRP06Y3815080.12

STEP 1 **CRY** SERIE/SERIES

Chiodo con piastrina con piedini
Nail with plate and round spacers

STEP 2 **Lunghezze chiodo (L)** 50 - 60 - 70 - 80 - 90 - 100
Nail lenght (L)

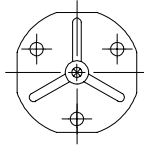
STEP 3 **Tipo piastrina**
Plate type



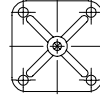
Y2000=ø20



Y2300=ø23



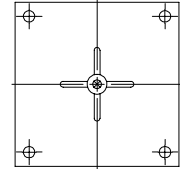
Y3800=ø38



Y3232=32x32



Y3815=38x15



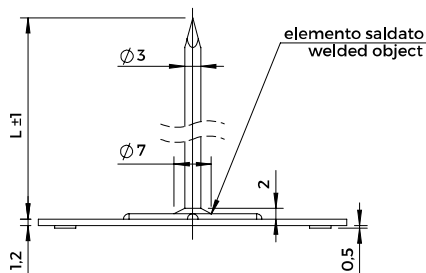
Y5858=58x58

STEP 4 **Diametro chiodo** 3 mm
Nail diameter

STEP 5 **Materiale** Acciaio Inox 316 Elettrolucidato .56 *Electropolished 316 Stainless Steel .56*
Material

| CODICE CODE | Lunghezza chiodo L±1mm Nail lenght L±1mm | | | | | | CODICE CODE | Lunghezza chiodo L±1mm Nail lenght L±1mm | | | | | |
|-----------------|---------------------------------------------|----|----|----|----|-----|-----------------|---------------------------------------------|----|----|----|----|-----|
| CRY_Y2000030.56 | | | | | | | CRY_Y3232030.56 | | | | | | |
| CRY_Y2300030.56 | 50 | 60 | 70 | 80 | 90 | 100 | CRY_Y3815030.56 | 50 | 60 | 70 | 80 | 90 | 100 |
| CRY_Y3800030.56 | | | | | | | CRY_Y5858030.56 | | | | | | |

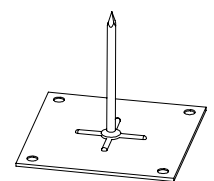
Le dimensioni sono indicative, non vincolanti, espresse in mm – Dimensions are indicative and not binding, expressed in mm



CRY 70 Y5858 030.56

STEP 1 **STEP 2** **STEP 3** **STEP 4** **STEP 5**

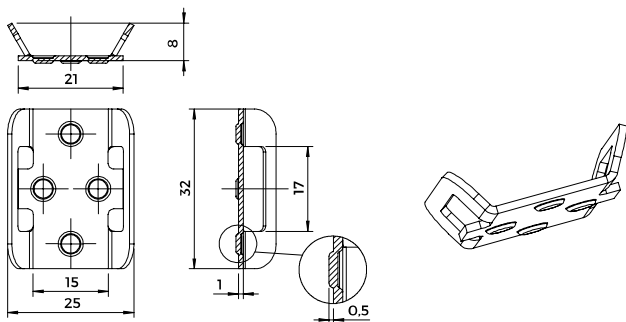
Esempio di designazione: Chiodo con piastrina quadra Y5858, lunghezza 70 mm, in acciaio inox 316 elettrolucidato
Example of code designation: Nail with Y5858 square plate, lenght 70mm, electropolished 316 stainless steel



CRY70Y5858030.56

PFRY08 SERIE/SERIES

Piastrina passafascetta con piedini
 Cable tie mount plate with round spacers



PFRY08R3221004.51

PFRY08R3221004.51

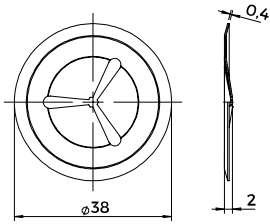
Materiale
 Material

Acciaio Inox 316
 Stainless Steel 316

Le dimensioni sono indicative, non vincolanti, espresse in mm – Dimensions are indicative and not binding, expressed in mm

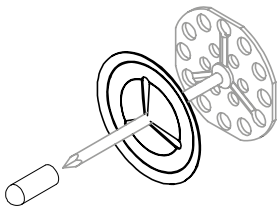
FAD03T38.50

Fermagli per pannelli
Spring clips



Materiale
Material

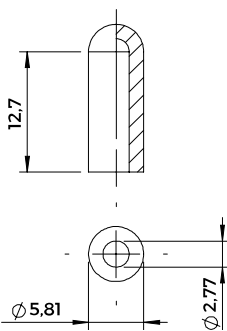
Acciaio Inox A2
Stainless Steel A2



Le dimensioni sono indicative, non vincolanti, espresse in mm – Dimensions are indicative and not binding, expressed in mm

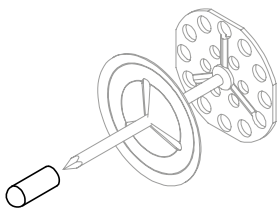
EE109-500

Cappucci per chiodi
Caps for nails



Materiale
Material

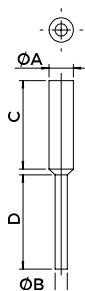
EPDM resistente fino a 177°C
EPDM resistant up to 177°C



Le dimensioni sono indicative, non vincolanti, espresse in mm – Dimensions are indicative and not binding, expressed in mm

MP/CPP

Tappi per protezione fori con maniglia di estrazione
Plugs with handle for holes protection



Materiale
Material

Silicone resistente fino a 315°C
Silicone resistant up to 315°C

| CODICE CODE | Per filetto For thread | A | B | C | D | Colore Color |
|----------------|---------------------------|------|------|-------|-------|-----------------------------|
| MP/CPP20 | M 4 | 3,96 | 1,57 | 15,88 | 19,05 | Rosa Pink |
| MP/CPP23 | M 5 | 4,95 | 2,79 | 25,40 | 25,40 | Verde chiaro Light green |
| MP/CPP37 | M 6 | 6,53 | 3,30 | 25,40 | 25,40 | Blu Blue |
| MP/CPP42 | M 8 | 7,92 | 3,73 | 25,40 | 25,40 | Verde Green |
| MP/CPP50 | M 10 | 9,53 | 3,99 | 25,40 | 25,40 | Grigio Grey |

Le dimensioni sono indicative, non vincolanti, espresse in mm - Dimensions are indicative and not binding, expressed in mm

