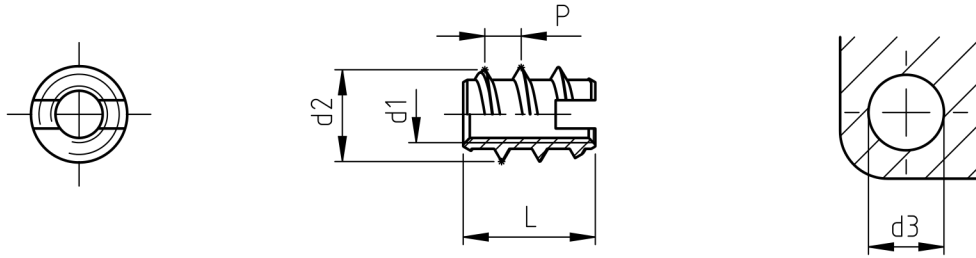


SELF-TAPPING BUSHINGS

Ensats®  
series 309

Application: soft thermoplastic materials, wood and its derived products.  
 Assembly: by special equipment.



code	metric thread	special external thread		total length	approx. hole diameter $\varnothing$ d3		min. hole depth
	d1	d2	P		soft material	hard material	
309 0025.80	M 2,5	5	1,6	6	3,5	3,6 ÷ 3,8	8
309 0030.80	M 3	5,5	1,6	6	4,1	4,2 ÷ 4,3	8
309 0035.80	M 3,5	6,5	1,6	8	4,6	4,7 ÷ 4,8	10
309 0040.80	M 4	7	2,5	10	5,1	5,2 ÷ 5,3	13
309 0050.80	M 5	9	3	12	6,6	6,7 ÷ 6,9	15
309 0060.80	M 6	10	4	14	7,6	7,7 ÷ 7,9	17
309 0080.80	M 8	13	4	20	9,9	10,1 ÷ 10,3	23
309 0100.80	M10	16	5	23	12,4	12,6 ÷ 12,8	26
309 0120.80	M12	19	5	26	15,4	15,6 ÷ 15,8	30
309 0140.80	M14	22	5	26	18,4	18,6 ÷ 18,8	30
309 0160.80	M16	24	5	26	20,4	20,6 ÷ 20,8	30

Non binding dimensions, expressed in mm.

In order to use correctly the products, we suggest to carry out some preliminary assembly tests to determine the right hole.

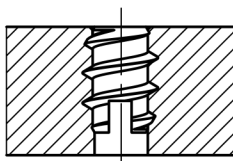
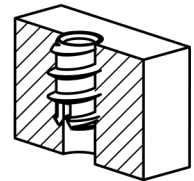
Standard     
  On demand     
  Not manufactured

Material: brass \_\_\_\_\_ .80  
 steel \_\_\_\_\_ .16

Finishing: brass bushings: natural  
 steel bushings: zinc plated

Tolerances: ISO 2768 - m  
 Threading: ISO 6 H metric

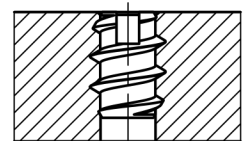
Example: self-tapping bushing Ensats® serie 309,  
 M5 thread, brass: 309 0050.80



Pict.1

Suggested installation on hard materials. Place the bushing as shown in Pict.1

Suggested installation on soft materials. Place the bushing as shown in Pict.2



Pict.2

Headquarter and Export department: